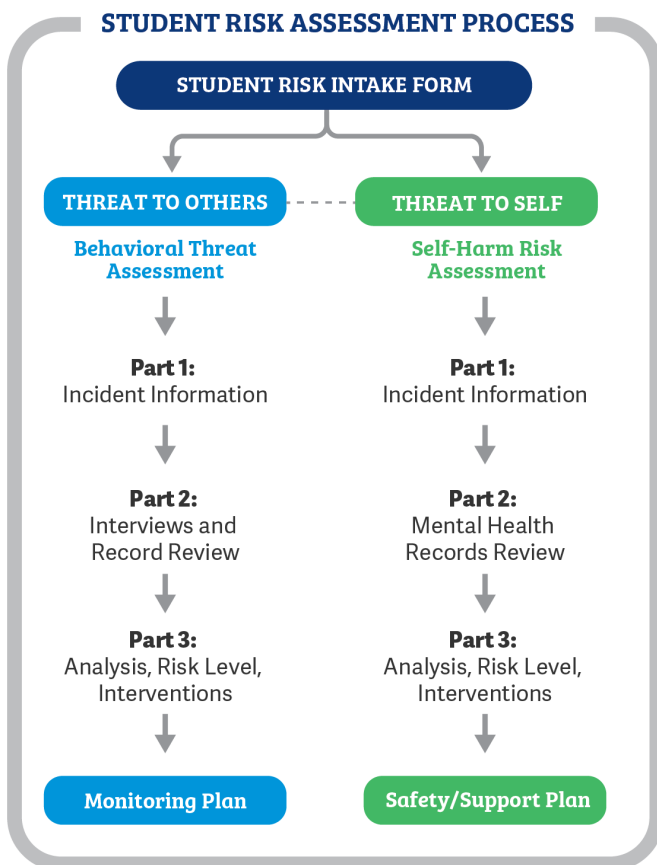


PCG's Behavioral Threat Assessment and Management Solution

Behavioral threat assessments are a proven method of early intervention that can help prevent acts of targeted violence in school environments. This practice is recommended by the Federal Bureau of Investigation (FBI), the U.S. Department of Education, and the U.S. Secret Service.

Behavioral Threat Assessment and Management

Our Behavioral Threat Assessment and Management (BTAM) solution manages threats to others and threats to self. It is integrated within our EDPlan case management platform that is used by over 3,600 school districts across the United States to securely manage supports to students with individual needs.



PCG's Solution

Our solution can align with any BTAM process. We offer out-of-the-box configurations aligned with state and local guidelines for:

- National Threat Assessment Center (NTAC)
- Salem-Keizer Cascade — Student Threat Assessment Teams (STAT)
- Comprehensive School Threat Assessment Guidelines (CSTAG)
- Florida Harm Prevention and Threat Management

We use an evidence-based, multi-disciplinary team approach to identify, evaluate, assess, and support students of concern who present a potential threat to themselves or others.

The graphic on the left shows the process a user would follow in our system when performing a risk assessment. The process will be aligned with your state and district-specific processes and procedures.

Suicide Risk Assessment

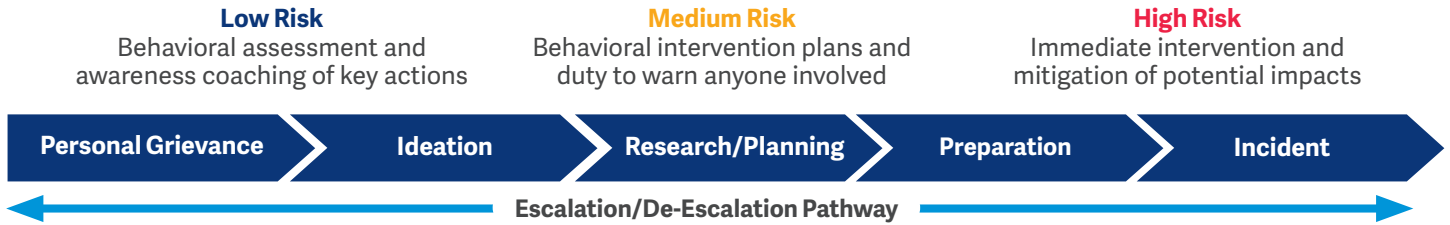
PCG's Suicide Risk Assessment solution gives school districts the opportunity to implement a standardized procedure to assess a student's suicide risk. With this tool, staff use common terminology to discuss a student's status and make plans for appropriate care.

Our SRA process will guide users to gather information relevant to a student's history, synthesize the information into a prevention-oriented suicide risk level determination, and develop a safety plan, as appropriate.

Recognizing the Pathway to Violence

Multi-disciplinary teams will implement a consistent, structured approach to identifying and supporting students who present a potential risk of violence/aggression, self-harm, or other concerning behaviors.

Our solution helps school personnel to identify students who are exhibiting behaviors along the pathway to violence, and intervene with supports designed to de-escalate those behaviors, to mitigate risk.



Core Benefits of Our Solution

Fidelity and Collaboration

- Ensures that a consistent process is followed and implemented for each behavioral incident/threat
- Facilitates collaboration and communication within each school's interdisciplinary team

Transparency, Security, and Compliance

- Enables transparency by providing district administrators with a line of sight for real-time threat management process steps, alerts/notifications, dashboards, and districtwide reporting

Aligns to Leading National Models

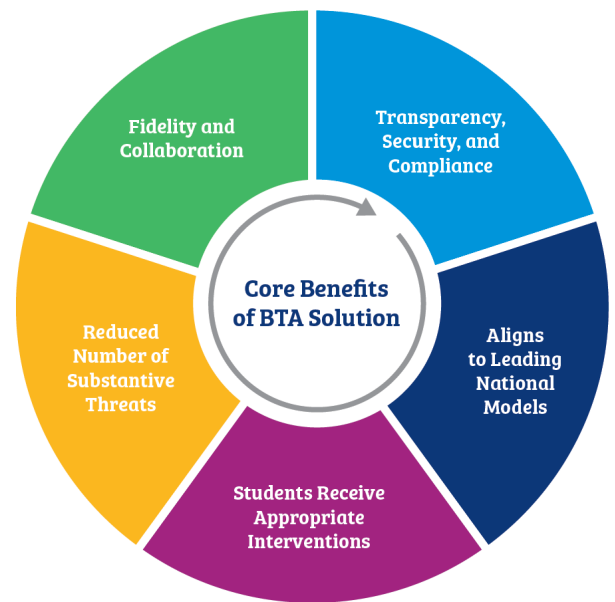
- Aligns to federal, state, and district best practices, for behavioral threat assessment
- Designed to meet the recommendations of the U.S. Secret Service, the FBI, and state commissions, on student threats

Students Receive Appropriate Interventions

- Threat monitoring plans generally prescribe counseling services for students, to address behavioral issues
- Follow-up monitoring to assure that interventions are taking place

Reduced Number of Substantive Threats

- By responding to issues earlier, the number of high-risk threats decreases



“These are not sudden, impulsive acts where a student suddenly gets disgruntled. The majority of these incidents are preventable. Schools need to think differently about behavior, school discipline and intervention.”

- Lina Alathari, Ph.D., Chief of U.S. Secret Service -
National Threat Assessment Center (NTAC)

Contact PCG today to learn more.

833-827-2977 @ threatassessment@pcgus.com

<https://behavioralthreatassessments.com>